

NOTE:

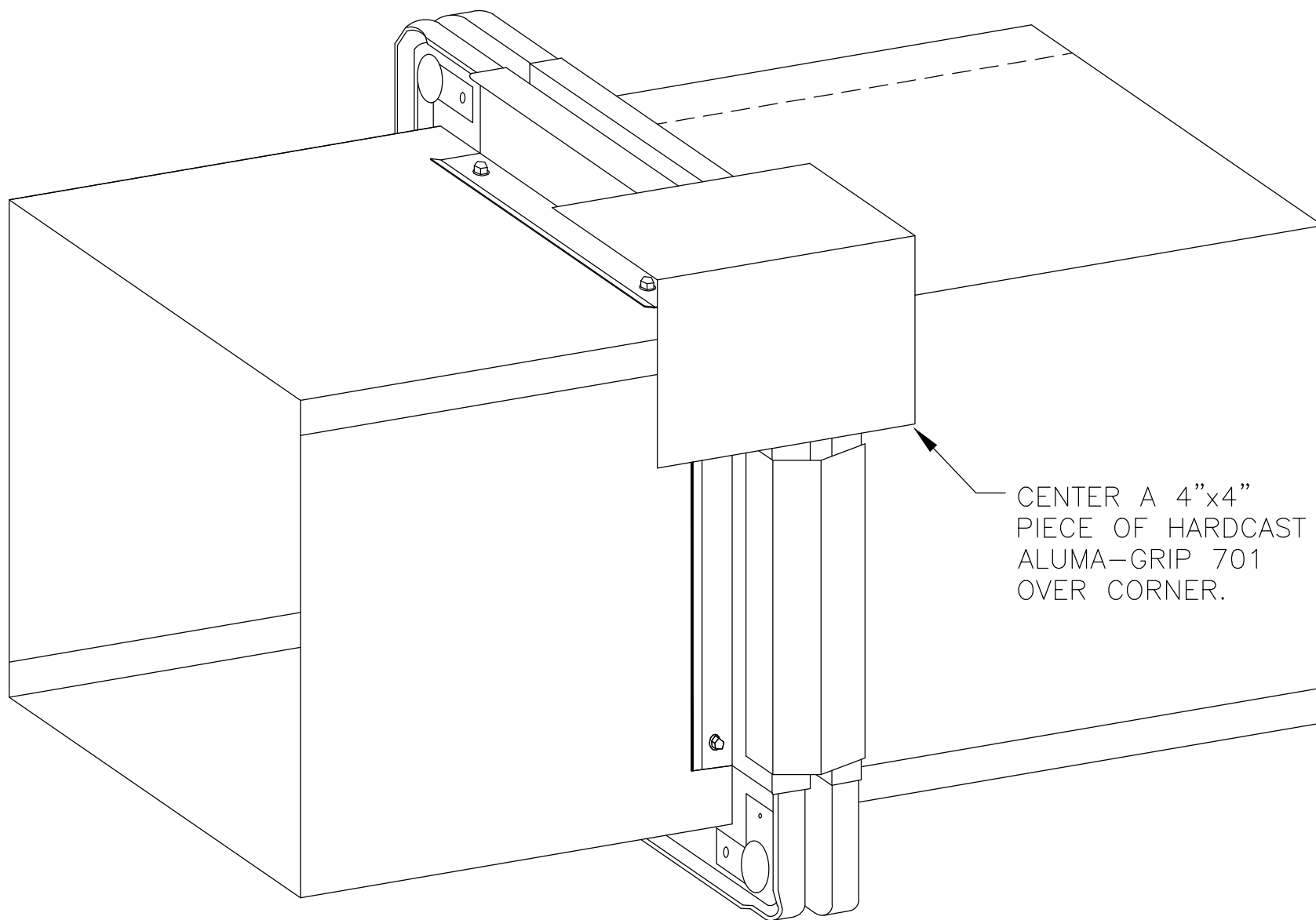
ON EXISTING DUCTWORK IT IS SUGGESTED TO TEST THE ADHESION OF THE ROLLED SEALANT PRIOR TO PERFORMING THE SEALING WORK. FOR OLDER DUCTWORK THE INSTALLER CAN USE AN ADHESIVE TO PRIME THE SURFACE FOR ROLLED SEALANT APPLICATION.

FO-1A

4-BOLT FLANGE

CARLISLE
HVAC PRODUCTS

© 2014 CARLISLE CORPORATION



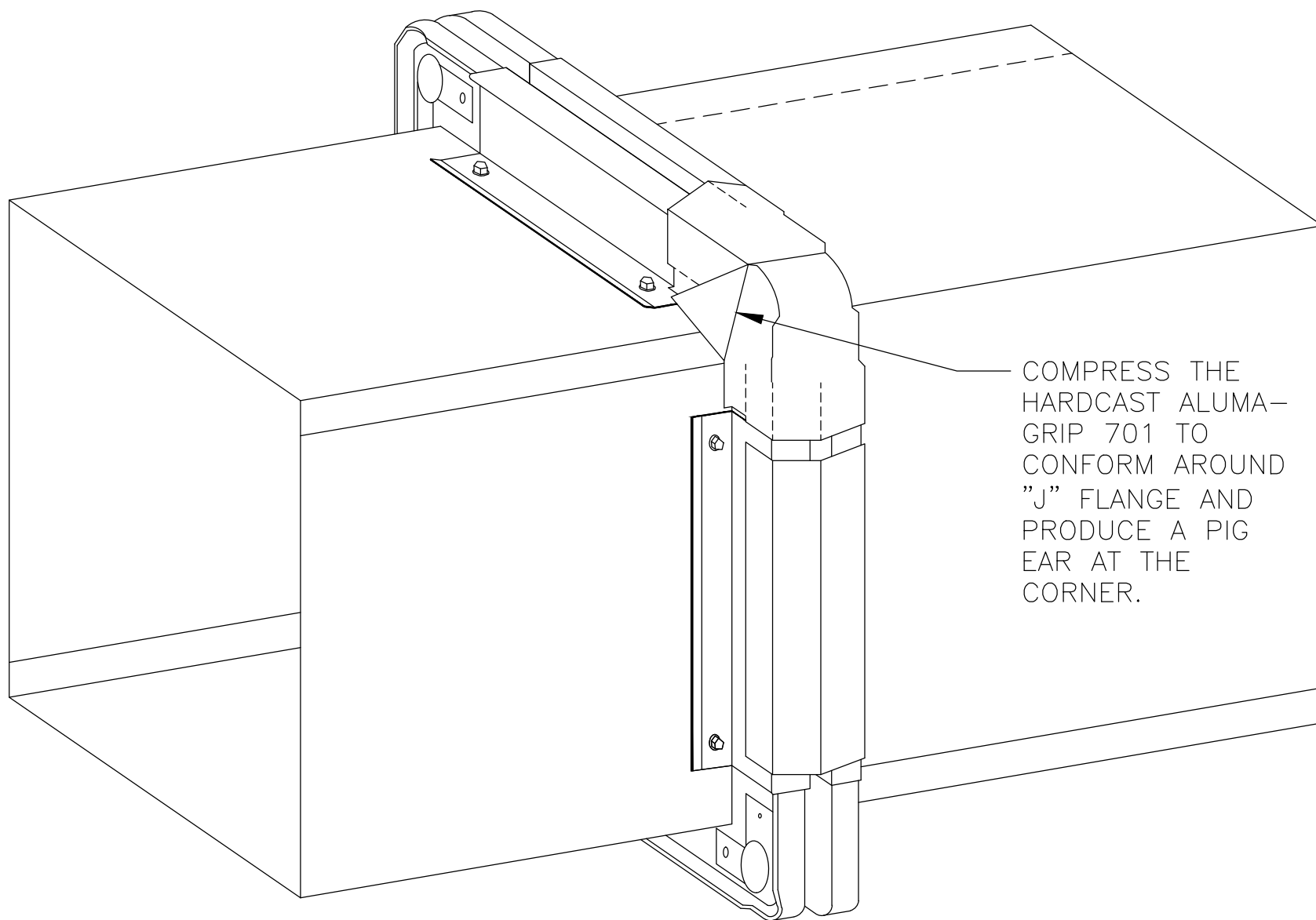
CENTER A 4"x4"
PIECE OF HARDCAST
ALUMA-GRIP 701
OVER CORNER.

FO-1C.1

4-BOLT FLANGE

CARLISLE
HVAC PRODUCTS

© 2014 CARLISLE CORPORATION

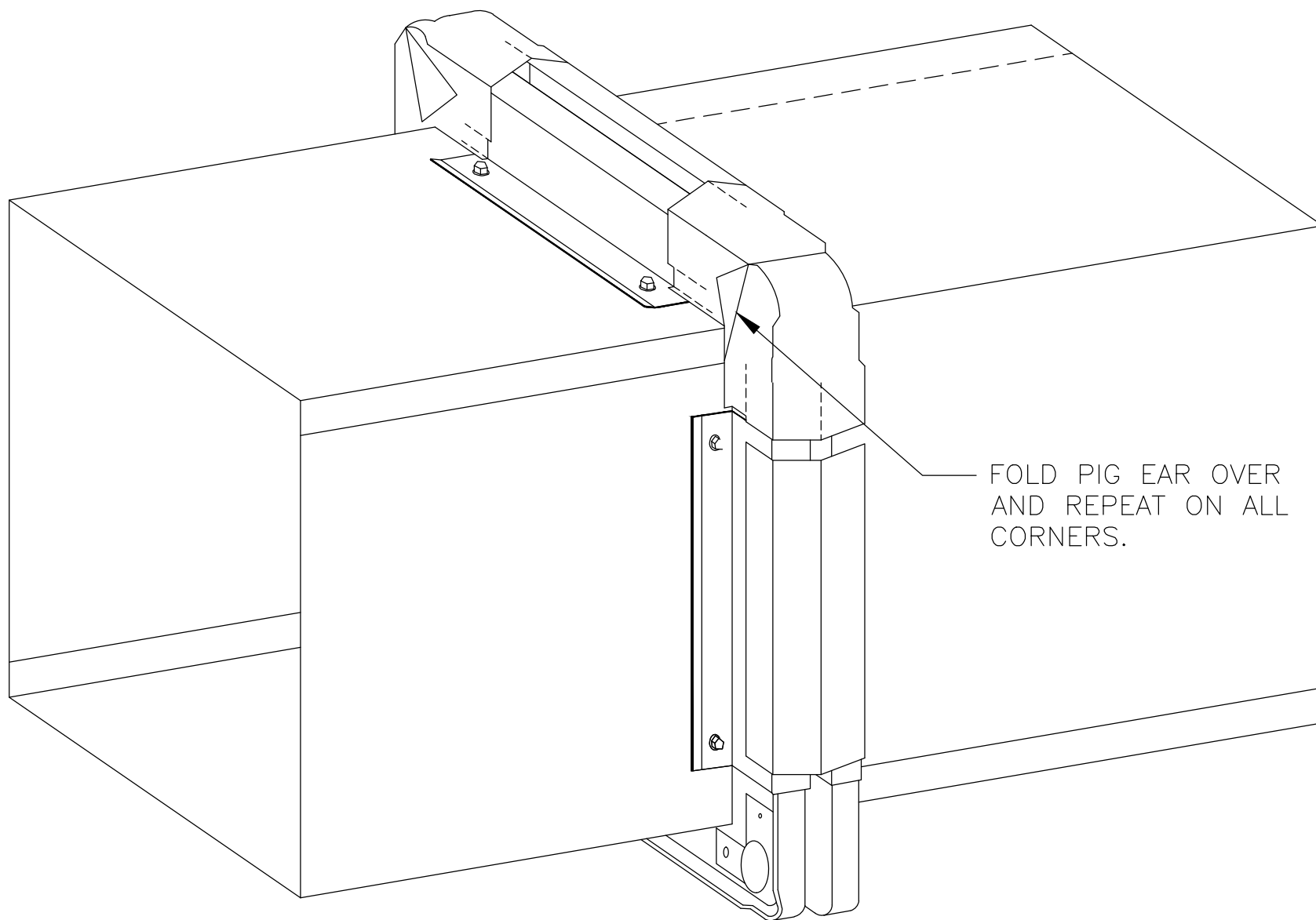


FO-1C.2

4-BOLT FLANGE

CARLISLE
HVAC PRODUCTS

© 2014 CARLISLE CORPORATION



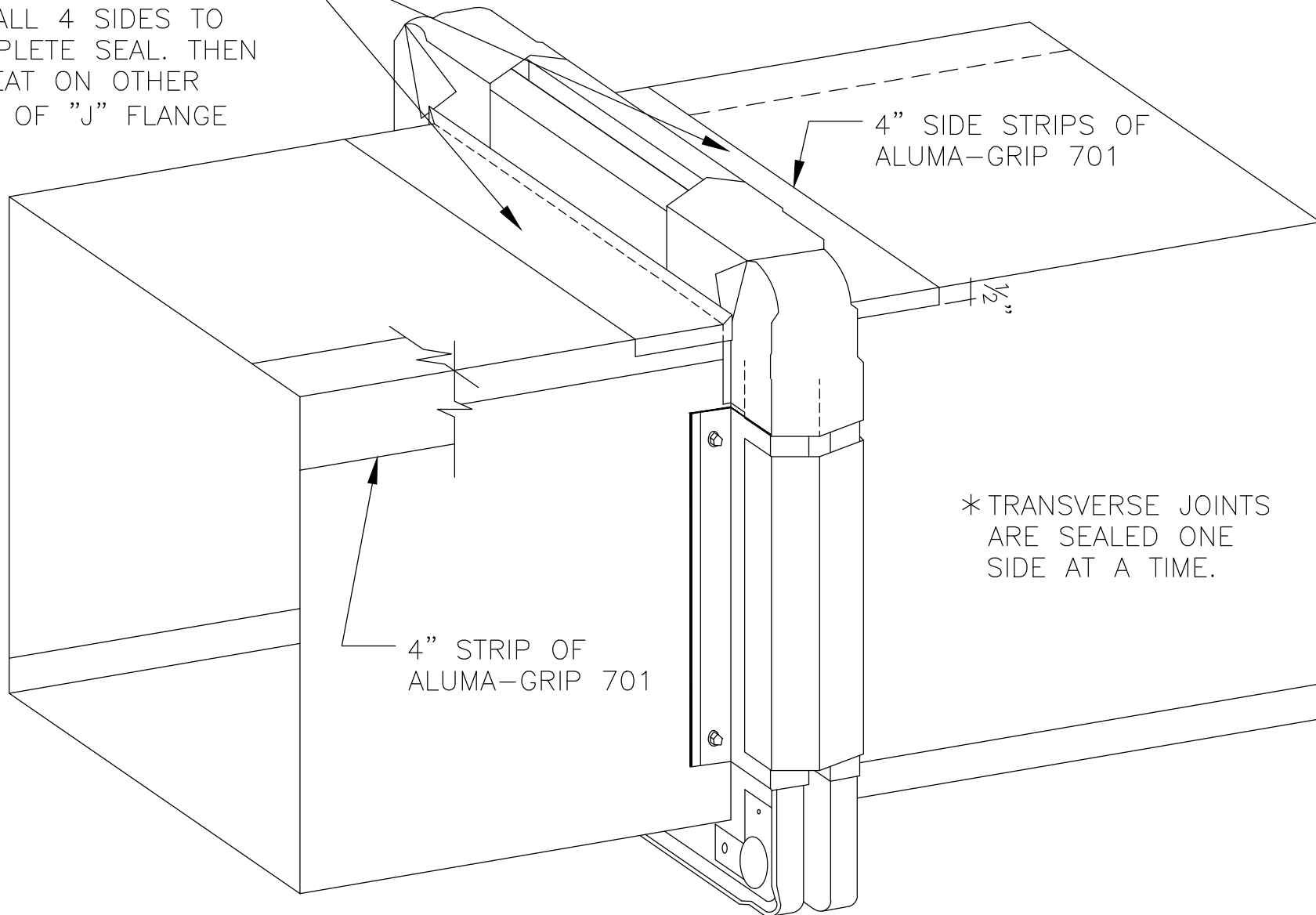
FO-1C.3

4-BOLT FLANGE

CARLISLE
HVAC PRODUCTS

© 2014 CARLISLE CORPORATION

PLACE 4" STRIPS
OF ALUMA-GRIP 701
ON ALL 4 SIDES TO
COMPLETE SEAL. THEN
REPEAT ON OTHER
SIDE OF "J" FLANGE



NOTES:

1. CUT ADJACENT STRIPS OF AFT-701 AND SPLICE A MINIMUM OF $\frac{1}{2}$ " ONTO THE AFT-701 COVER STRIPS.
2. USE THE SQUEEGEE TO ELIMINATE WRINKLES AND SEAL THE AFT-701 TO THE DUCTWORK.
3. COMPLETE USING 2 SEPARATE PIECES OF AFT-701 FOR EACH SIDE.

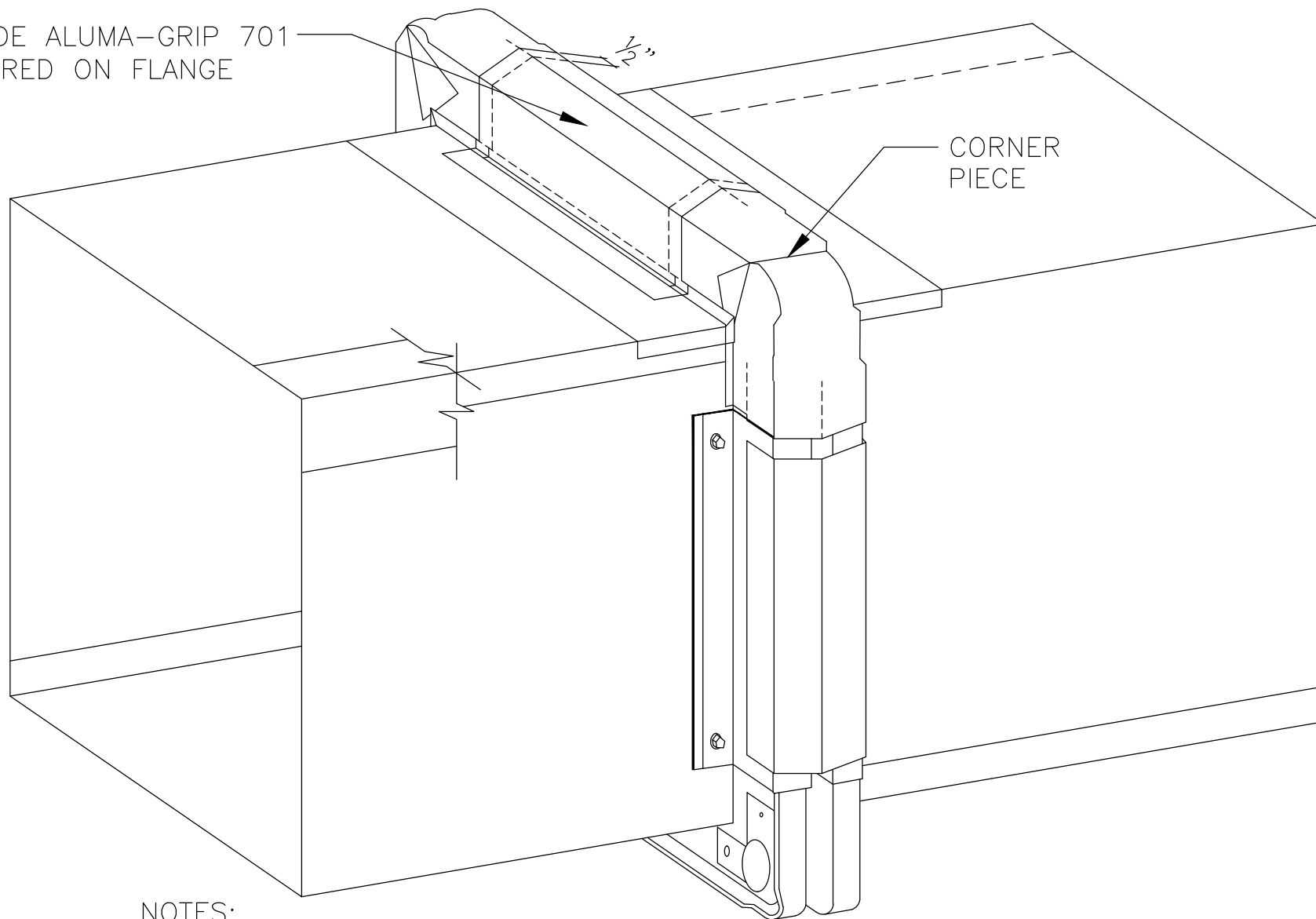
FO-1C.4

4-BOLT FLANGE

CARLISLE
HVAC PRODUCTS

© 2014 CARLISLE CORPORATION

4" WIDE ALUMA-GRIP 701
CENTERED ON FLANGE



NOTES:

1. CUT AND CENTER 4" WIDE COVER STRIP OF AFT-701 OVER FLANGE.
2. SPLICE AFT-701 COVER STRIP A MINIMUM OF $\frac{1}{2}$ " ONTO CORNER PIECES.
3. CONTOUR THE COVER STRIP USING POSITIVE PRESSURE TO CONFORM TO FLANGE.
4. COMPLETE ALL 4 SIDES WITH 4 DIFFERENT PIECES.

FO-1C.5

4-BOLT FLANGE

CARLISLE
HVAC PRODUCTS

© 2014 CARLISLE CORPORATION