

NOTE:

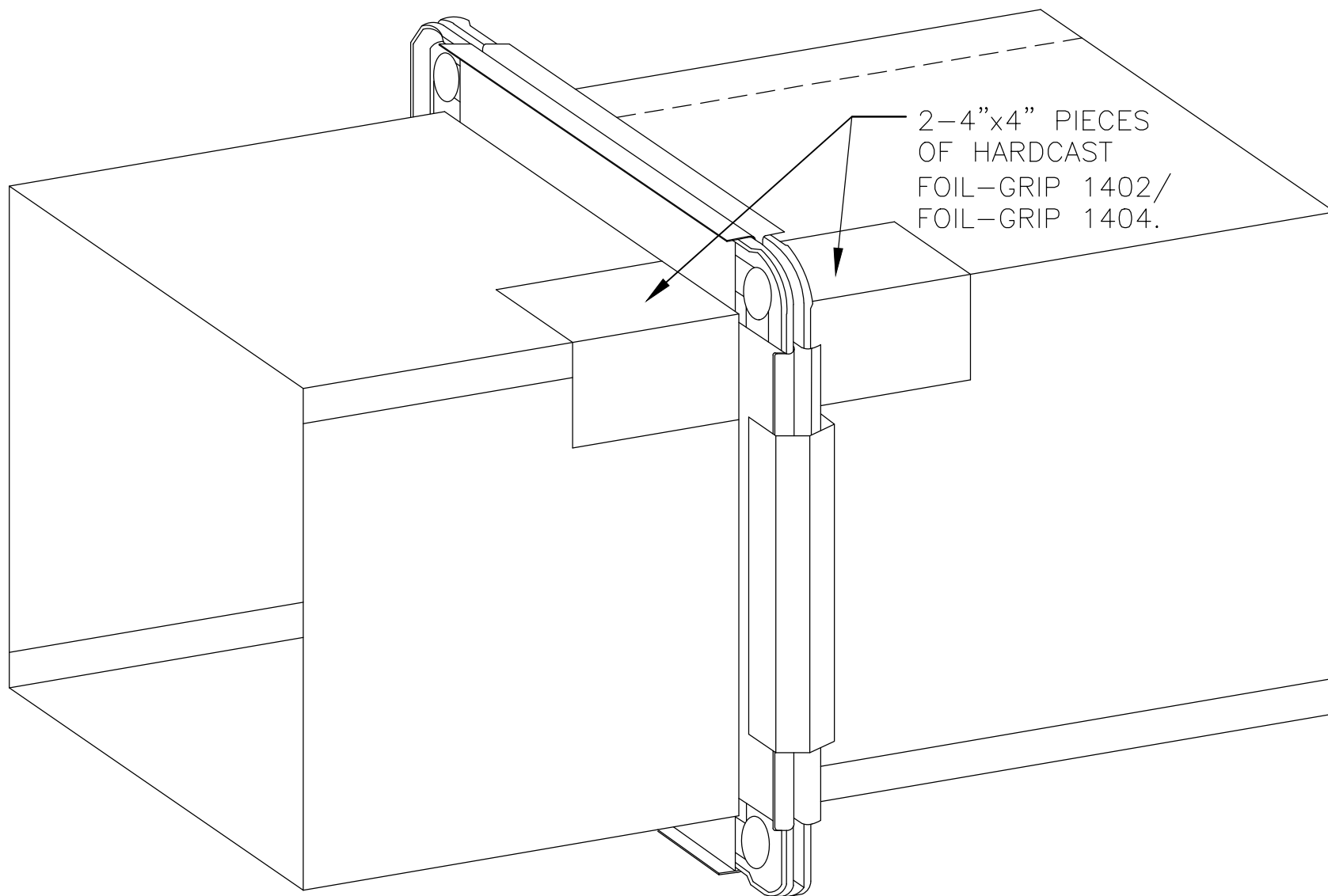
ON EXISTING DUCTWORK IT IS SUGGESTED TO TEST THE ADHESION OF THE ROLLED SEALANT PRIOR TO PERFORMING THE SEALING WORK. FOR OLDER DUCTWORK THE INSTALLER CAN USE AN ADHESIVE TO PRIME THE SURFACE FOR ROLLED SEALANT APPLICATION.

FO-2A.1

TDC/TDF FLANGE

**CARLISLE**  
HVAC PRODUCTS

© 2017 CARLISLE CORPORATION

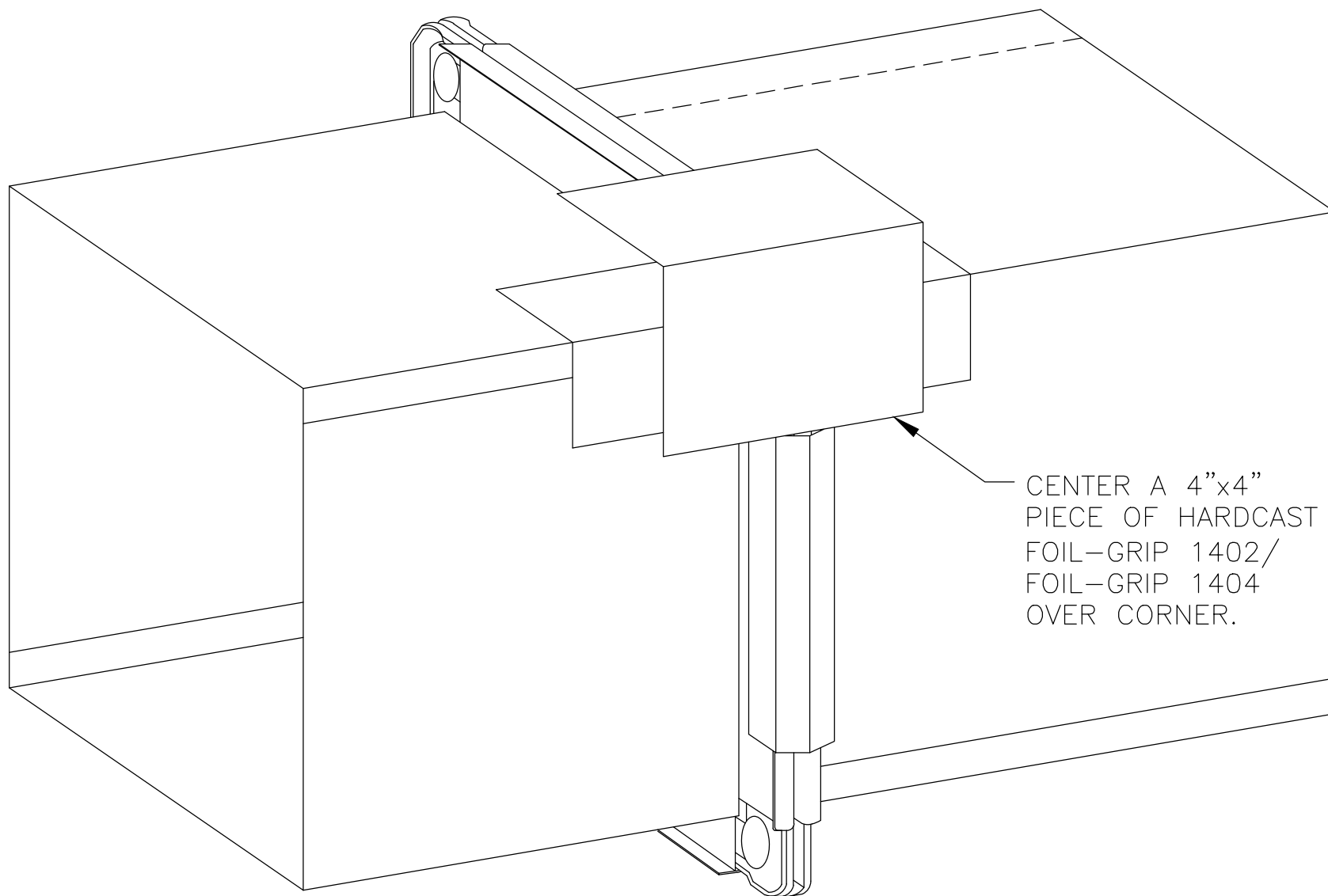


FO-2A.2

TDC/TDF FLANGE

**CARLISLE**  
HVAC PRODUCTS

© 2017 CARLISLE CORPORATION

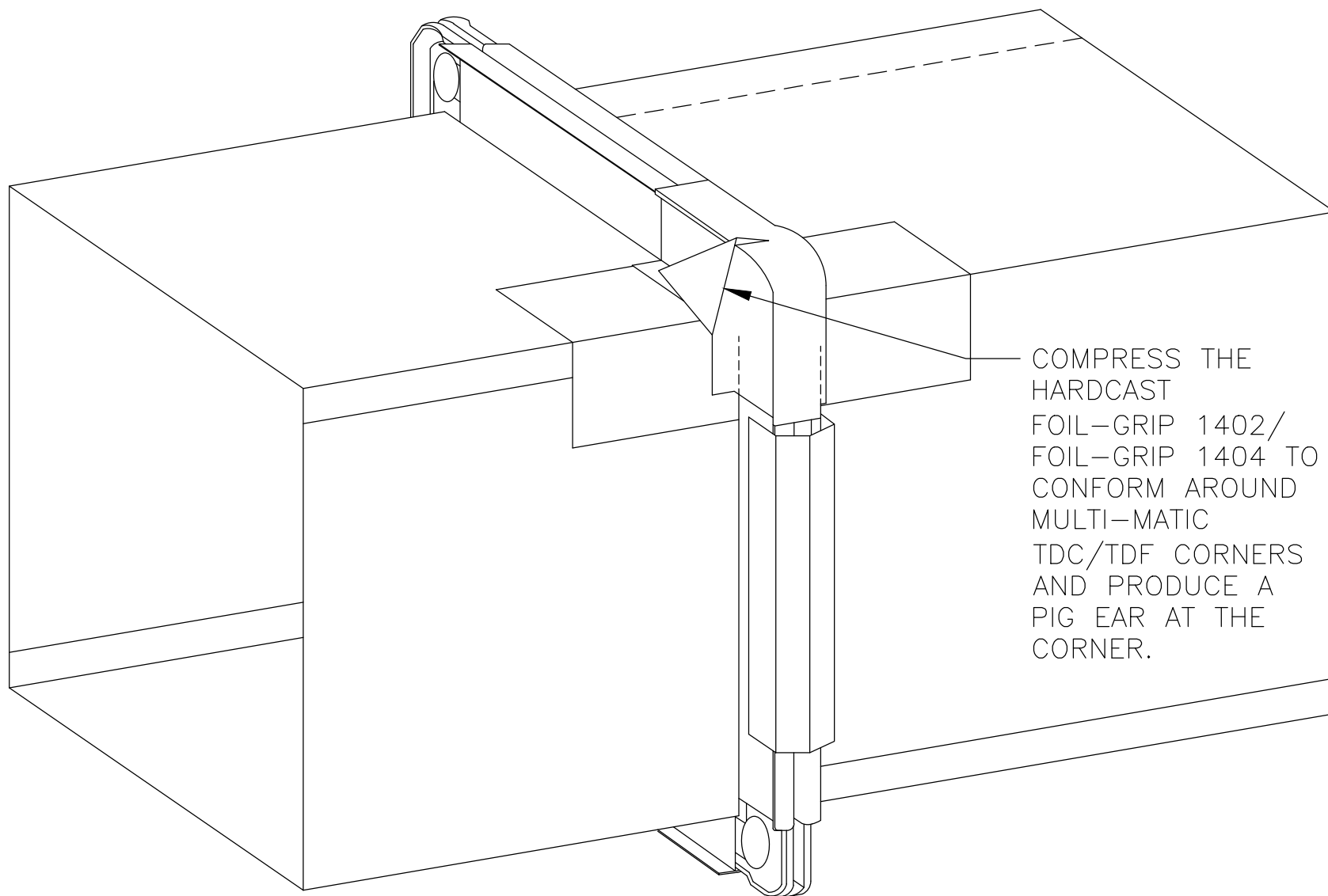


FO-2C.1

TDC/TDF FLANGE

**CARLISLE**  
HVAC PRODUCTS

© 2017 CARLISLE CORPORATION

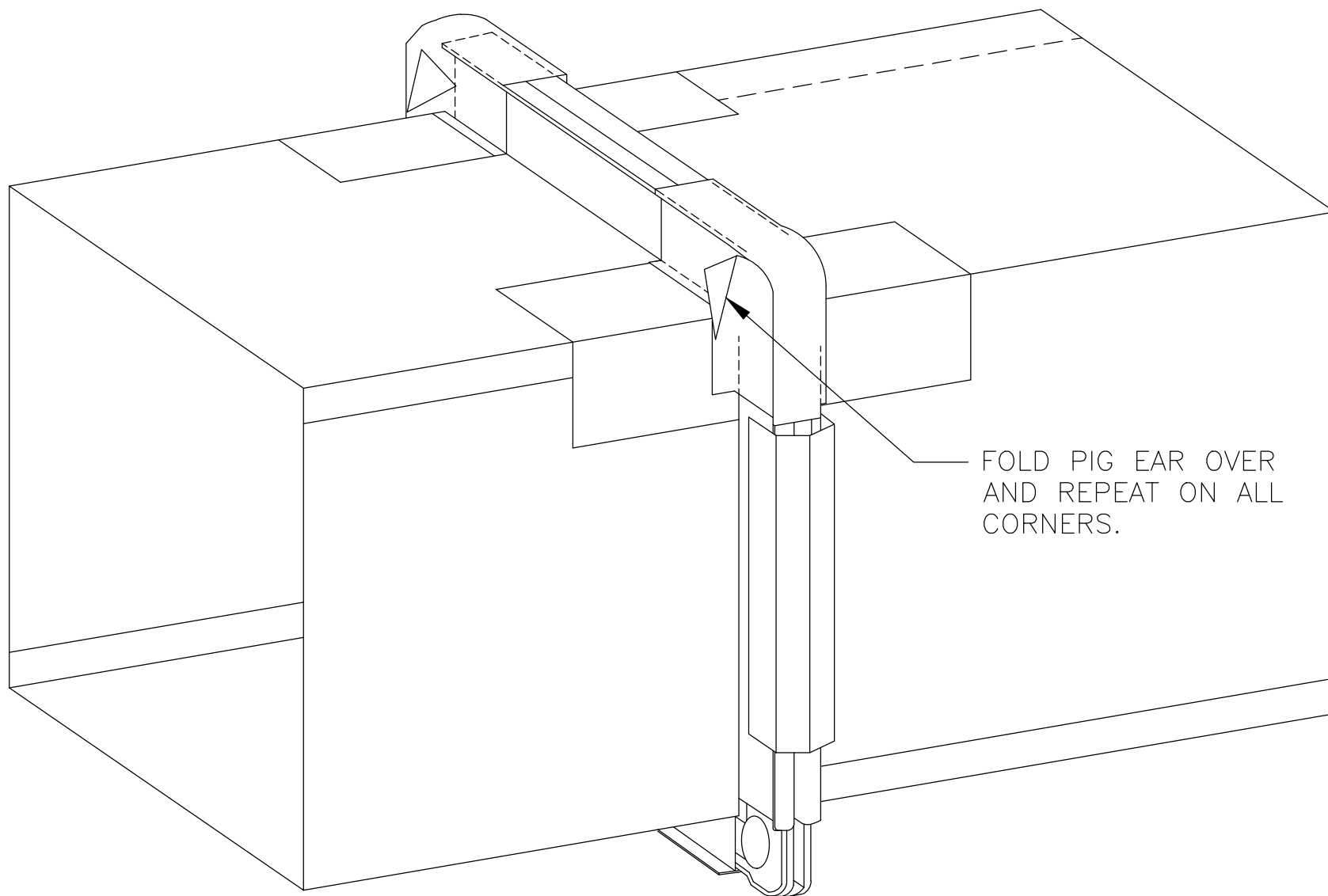


FO-2C.2

TDC/TDF FLANGE

**CARLISLE**  
HVAC PRODUCTS

© 2017 CARLISLE CORPORATION



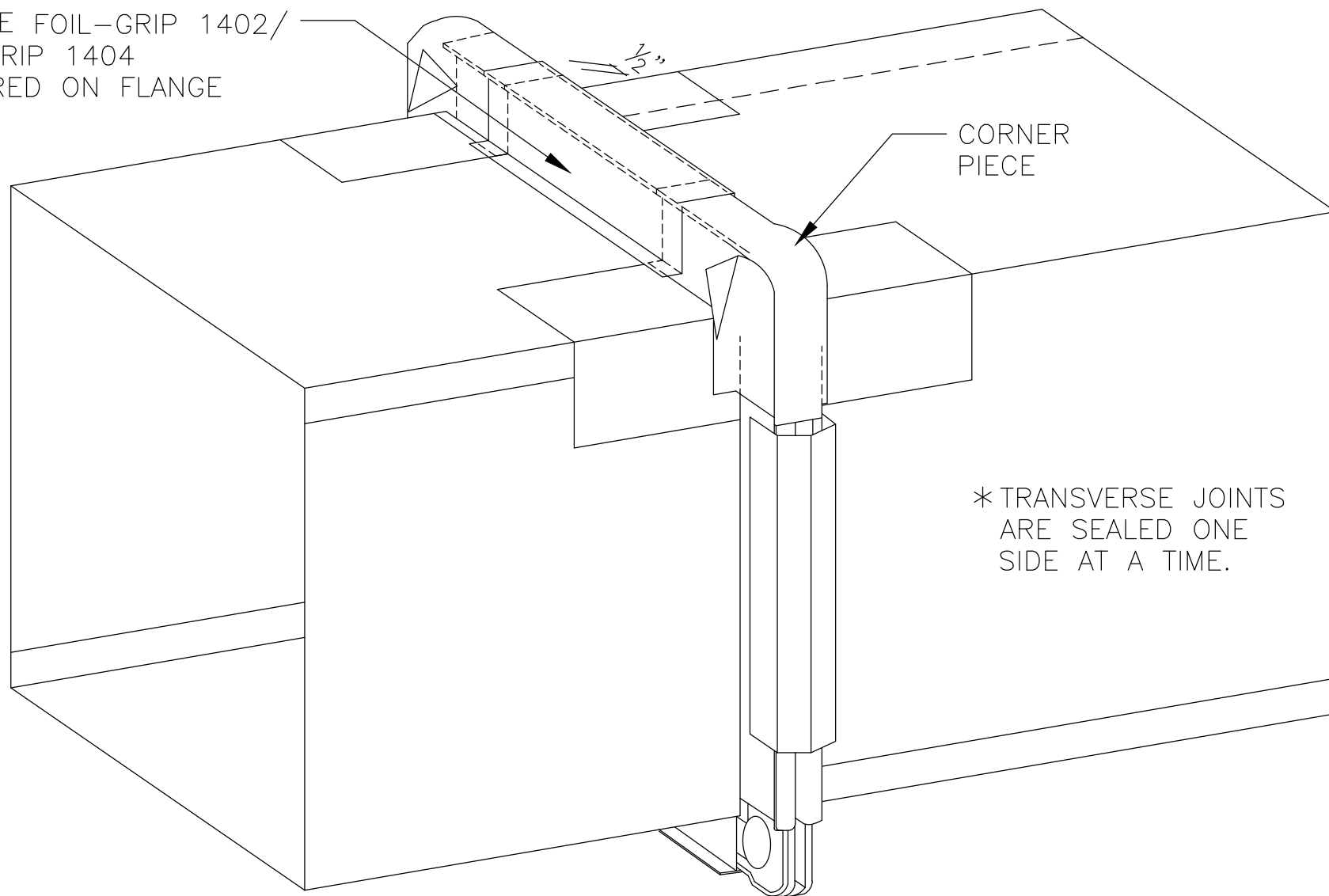
FO-2C.3

TDC/TDF FLANGE

**CARLISLE**  
HVAC PRODUCTS

© 2017 CARLISLE CORPORATION

4" WIDE FOIL-GRIP 1402/  
FOIL-GRIP 1404  
CENTERED ON FLANGE

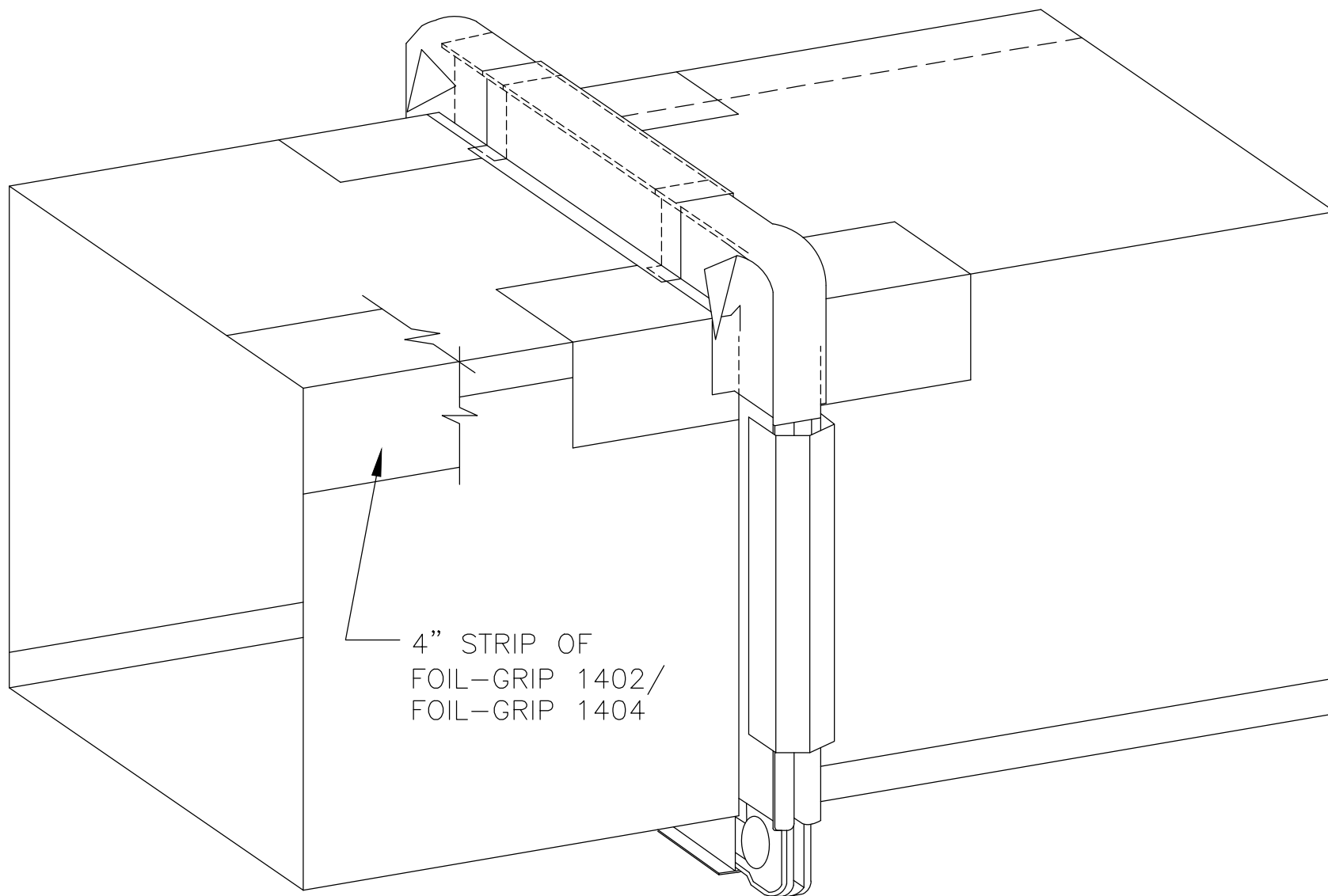


FO-2C.4

TDC/TDF FLANGE

**CARLISLE**  
HVAC PRODUCTS

© 2017 CARLISLE CORPORATION



FO-2C.5

TDC/TDF FLANGE

**CARLISLE**  
HVAC PRODUCTS

© 2017 CARLISLE CORPORATION