

Circular Duct Hangers



For the suspension of circular ductwork using $\frac{3}{8}$ " threaded rod:

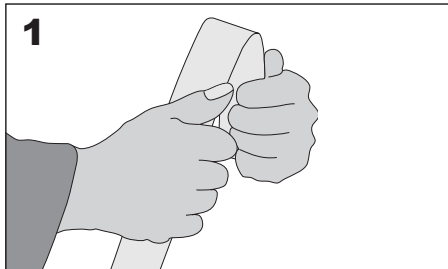
- Standard 1" hanger strap (BA3), 1 $\frac{1}{2}$ " hanger strap (BA4) encircles the duct.
- A press-formed steel bracket joins the two ends of the steel strap and provides a suspension point for the threaded rod.
- The steel strap is hand-formed into the bracket, requires no tools and is self-locking.

FEATURES AND BENEFITS

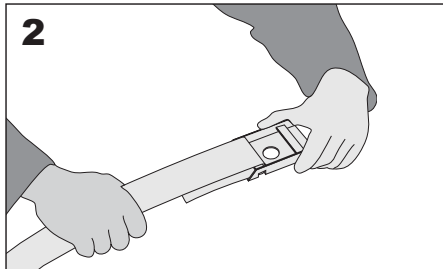
- Heavy galvanized steel bracket for rigidity
- Galvanized coiled strip or strips cut from waste material may be used
- High load-bearing capacity

PART NUMBER	PRODUCT DESCRIPTION	QTY	WEIGHT
308360	CIRCULAR DUCT HANGER BA 3 GALV	200/case	0.25 lbs.
308651	CIRCULAR DUCT HANGER BA 4 GALV	200/case	0.25 lbs.

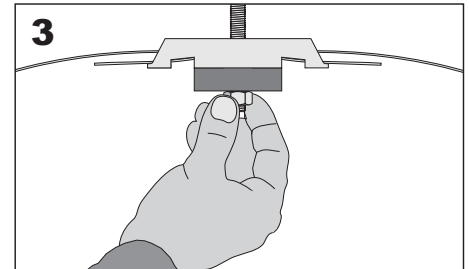
INSTALLATION



Both ends of the strap are bent over approximately 1-2 inches. **Be sure to protect your hands with gloves!**



Hook the ends through the slots in the bracket.



Suspend the assembly from a threaded rod.