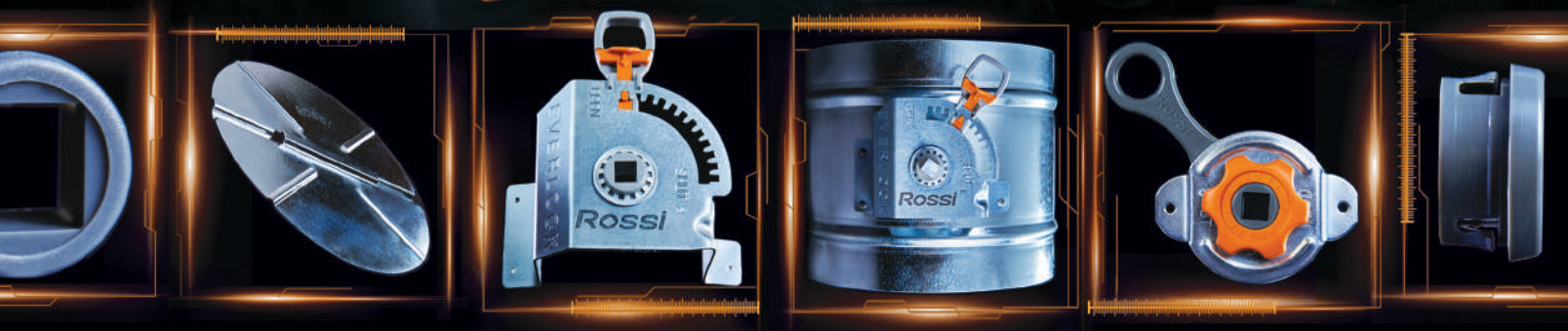


ROSSI



CARLISLE
HVAC BRANDS

30 years of HVAC innovation



Thanks for considering Rossi as your duct hardware solution. Our products are the result of non-stop innovation. Years spent researching, designing, & listening to feedback from duct fabricators like you. That's how we learn what is most important to you. That's why SNIPS magazine recently honored me with the title of Industry ICON. And that's why we never stop asking "what if there's a better way?"

It all started back in 1979 when I was running a duct fabrication shop in Sun Valley, California. As a proud member of Sheet Metal Workers Union Local 108 (later Local 105), and as a mechanical engineer, I strived to improve every aspect of our fabricated duct and fittings.

But I had one major problem - crappy duct hardware. No matter which suppliers I turned to, all the damper regulators used wingnuts or hexnuts! These inevitably rattle loose and ruin the air balance. And it wasn't just the regulators that were awful. The damper blades and bushings commonly used across the industry were not much better. Jiffy damper blades would easily pop out of place and flop around in the air flow. And it took tons of time to drill holes in fittings just to screw in the bushings. This outdated assembly process wasted time and created big labor costs at our duct shop, prompting me to wonder "what if there's a better way?"

So in 1989 I founded Rossi, a company focused on designing new kinds of duct hardware. First, we invented continuous-bar damper blades with a built-in channel for the bar. This eliminated floppy jiffy blades. Next, we created snap-in bushings, eliminating air leakage in duct and leading to our Speedy Assembly process. This greatly reduces assembly time in your duct shop. Then, we set our sights on those pesky wingnuts & hexnuts. By inventing and patenting our positive-locking regulators, we guaranteed that your air flow would finally remain balanced for good. Time and again, Rossi changed the game by innovating duct hardware. That's why our products have been adopted by the biggest duct fabricators and implemented across the highest profile projects in the United States. And I couldn't be more proud when, upon my retirement, my son and daughter took over and have always run Rossi as a true family business.

There is no other country in the world where my dream of revolutionizing duct hardware could have become a reality. I mean there's a reason they call it the American dream. That's why Rossi products will always be 100% designed, engineered and manufactured here in the USA. And with many exciting new products in the pipeline, Rossi can't wait to show you what's next. Constant innovation, the American dream and a simple question way back in our old duct shop - "what if there's a better way?" It's all in Rossi's DNA. That's why Rossi is always the original and others have been following our lead ever since.

And that's what makes Rossi the ultimate duct hardware.

Vic Petrossian | Founder | Rossi Air Flow, Inc.

Vic Petrossian

RossiTM
Innovating HVAC Hardware

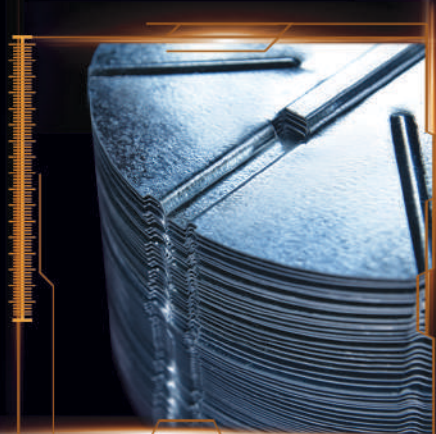


The Ultimate Duct Hardware

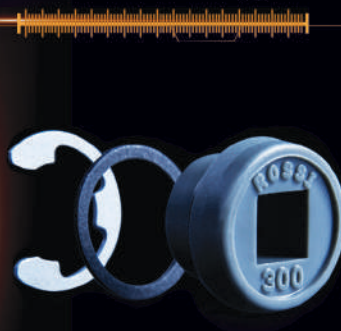
Regulators



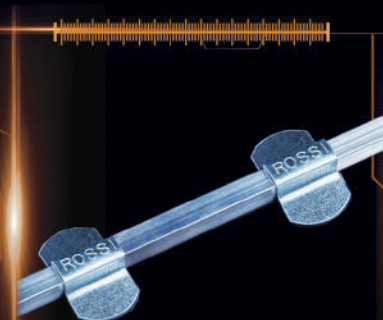
Blades & Bars



Bushings



Accessories



NO MORE WINGNUT DAMPERS



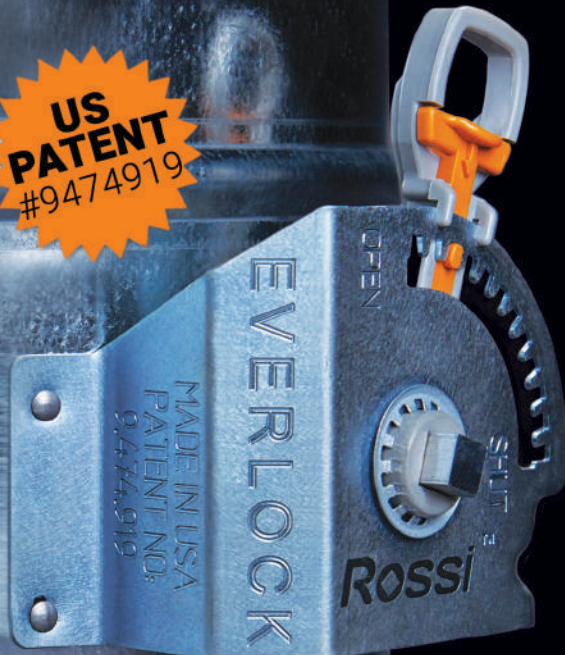
Wingnuts **vibrate loose**
make **rattling noises**
and **ruin your air balance**

Did you know wingnuts were invented in 1890?



Get Our Patented Positive-Locking Regulators

**US
PATENT
#9474919**



- ✓ **The original** positive-locking regulator
- ✓ 1-click locking
- ✓ Guarantees air flow stays balanced
- ✓ Handle indicates true blade position
- ✓ Exerts no force on duct system

Everlock™

Positive-Locking Damper Handle for 3/8" bar

Available with 2" or 1.5" standoff bracket



Megalock™

Positive-Locking Damper Handle for 1/2" round bar & 1/2" or 3/8" square bar

For rectangular blades and larger applications (18" diameter blades and larger)



Regulators

Twistlock™

Hand Twist Locking Damper Handle for 3/8" bar

Available with 2" or 1.5" standoff bracket



- ✓ Infinite range of control
- ✓ Superior-grip polymer knob grabs metal for better lock
- ✓ Handle indicates true blade position
- ✓ Hand operated / no tool needed
- ✓ Available in galvanized, stainless steel or aluminum

Twistlock Flat™

Hand twist Locking Damper Handle for 3/8" bar

Sits flat against duct when no standoff is needed



- ✓ Infinite range of control
- ✓ Superior-grip polymer knob grabs metal for better lock
- ✓ Hand operated / no tool needed
- ✓ Built-in bushing for speedy assembly

NO MORE LEAKY BUSHINGS



Old style bushings leave air gaps which cause excessive leakage. Our bushings snap tight and exceed all industry leakage standards

Snap-In Bushings

For medium or low pressure applications (e.g. 1" WG - 6" WG on 8" diameter duct)



- ✓ Snaps and locks into duct instantly for speedy assembly
- ✓ Near-zero leakage (exceeding all industry standards)
- ✓ Available for 3/8" or 1/2" square rod
- ✓ Longer bushing protects duct lining

Clip-On Bushings

For high pressure applications (e.g. greater than 6" WG on 8" diameter duct)

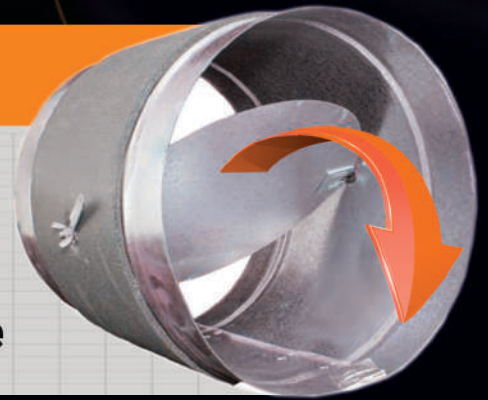


- ✓ Clip locks bushing into duct for added security
- ✓ Near-zero leakage (exceeding all industry standards)
- ✓ Closed-end eliminates leakage
- ✓ Washer eliminates leakage

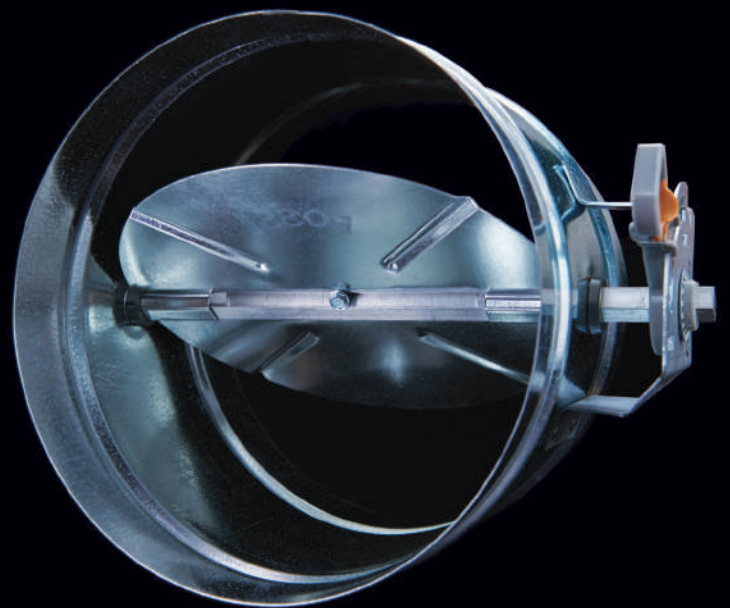
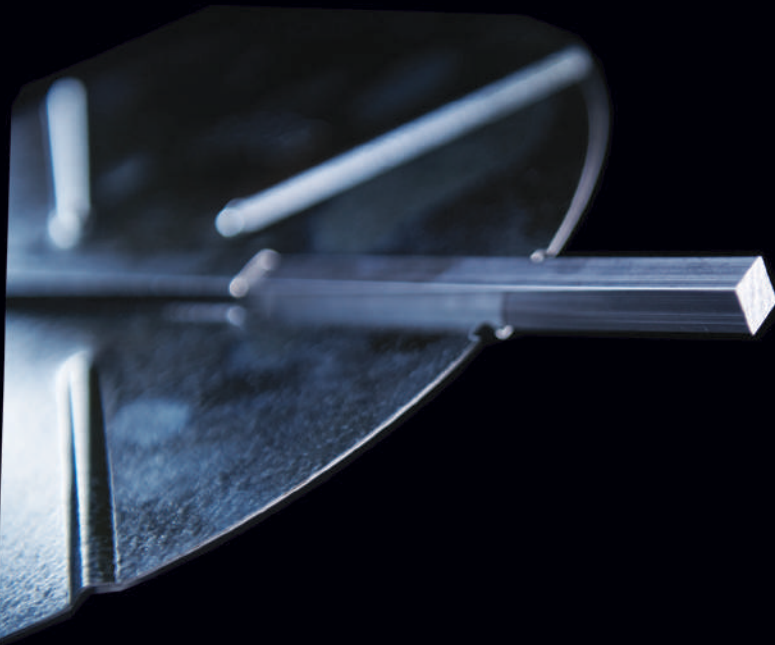
NO MORE FLOPPY BLADES



Spring-loaded jiffy blades can pop out & flop around, **rattling** and **ruining your air balance**



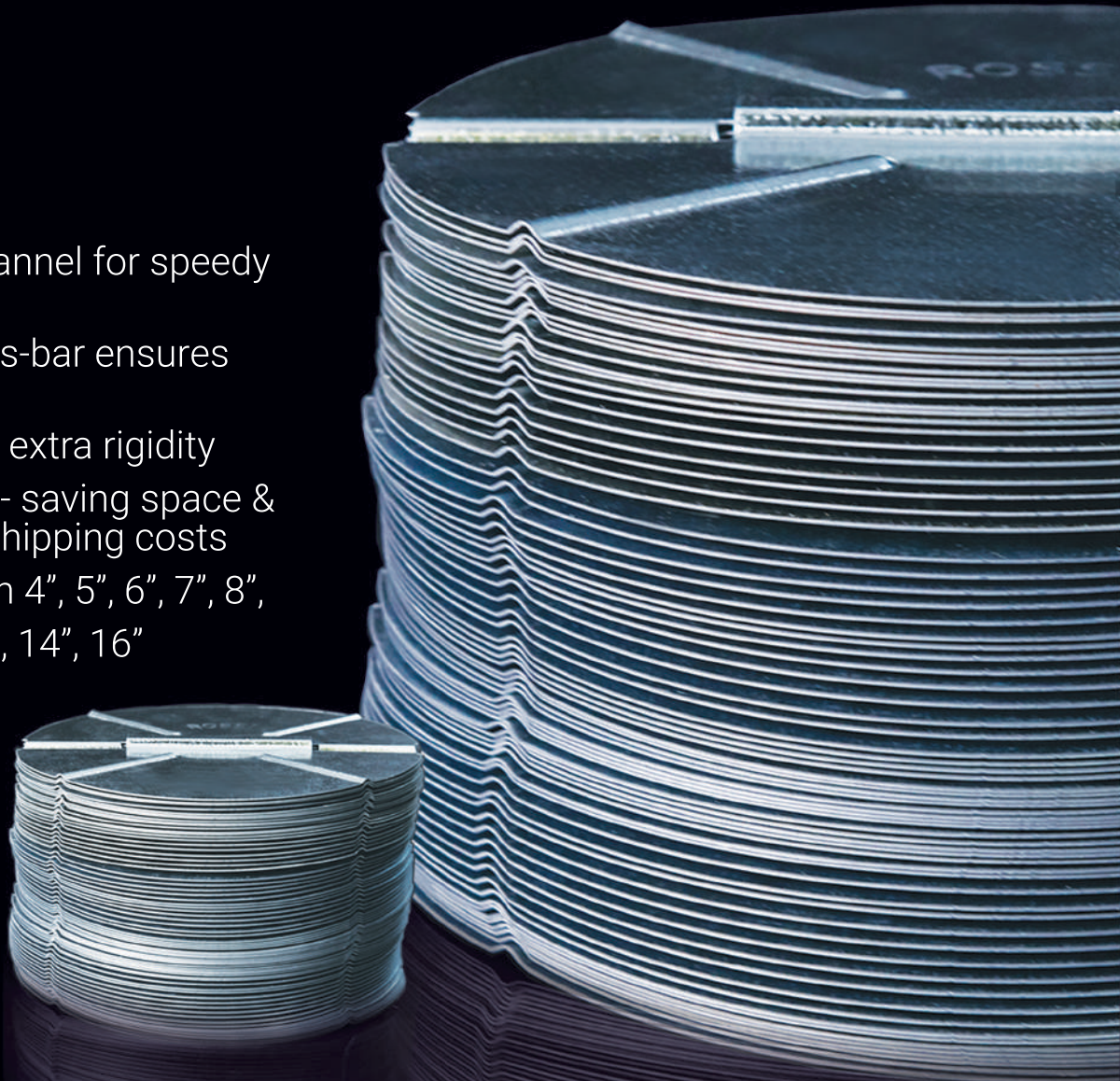
**Get our
continuous-bar blades
with pre-stamped
channel & bar**



Continuous-Bar Blades™

We offer 4" to 16" diameter blades with pre-cut bars

- ✓ Built-in channel for speedy assembly
- ✓ Continuous-bar ensures stability
- ✓ Ribbed for extra rigidity
- ✓ Stackable - saving space & reducing shipping costs
- ✓ Available in 4", 5", 6", 7", 8", 9", 10", 12", 14", 16"



Accessories

U-CHANNELS

We offer U-Channels to use your own rectangular blades or larger diameter round blades with Rossi bushings and regulators



- ✓ Attach rectangular blades to Rossi components
- ✓ Attach larger diameter blades to Rossi components
- ✓ Available for 3/8" or 1/2" square bar

Assembly Instructions

SPEEDY ASSEMBLY

Our components assemble into your duct in less than 90 seconds

1. Drill 3/4" holes on each side of your sheet metal sleeve and click the Snap-In Bushings into place



2. Holding the blade in position, pass the 3/8" square bar through the bushings and the channel in the blade



3. Spotweld or rivet the regulator in place, making sure the handle and blade are in corresponding positions



4. Center the blade and secure the system with a self-drilling screw



More Reasons to Switch to Rossi



Our products are 100% designed, engineered and manufactured in the U.S.A.



We sell direct to duct fabricators and have quantity discounts to save you big money



Our handles, bushings & blades assemble in 90 seconds, boosting your duct fab productivity



Our products comply with SMACNA standards and our materials are UL-listed / Plenum-rated

What Rossi Customers are Saying

"Since we've been using Rossi products our customers can't stop raving about the dampers. Thanks."

Tom Atkinson, General Manager
Superior Sheet Metal | Hudson, NH

"We have saved many hours of fabrication time because they are so easy to install."

John Welch, Sheet Metal Shop Superintendent
Harris | Bellingham, WA

"A quality product at a lower cost that reduces shop installation time... with no tools needed for airflow adjustments. I am 100% satisfied!"

Harvey LaFlamme, Sheet Metal Shop Foreman
Western Allied Mechanical, Inc. | Menlo Park, CA

"I firmly believe that using your dampers exclusively has set us apart from other sheet metal contractors in our area."

Tim Angelosanto, Vice President
Eastern Vent Systems, Inc. | Pelham, NH

To contact your local representative, visit www.CarlisleHVAC.com or call (877) 495-4822

